

Cover Page

History:

- 1. Rev A – Initial release.
- 2. Rev B – Fixed Camera/Display, naming and position.
- 3. Rev C – Added Polycom Touch Control and Eagle Eye III



ATX 200/300/400

System Wiring Specification

Polycom Telepresence Engineering

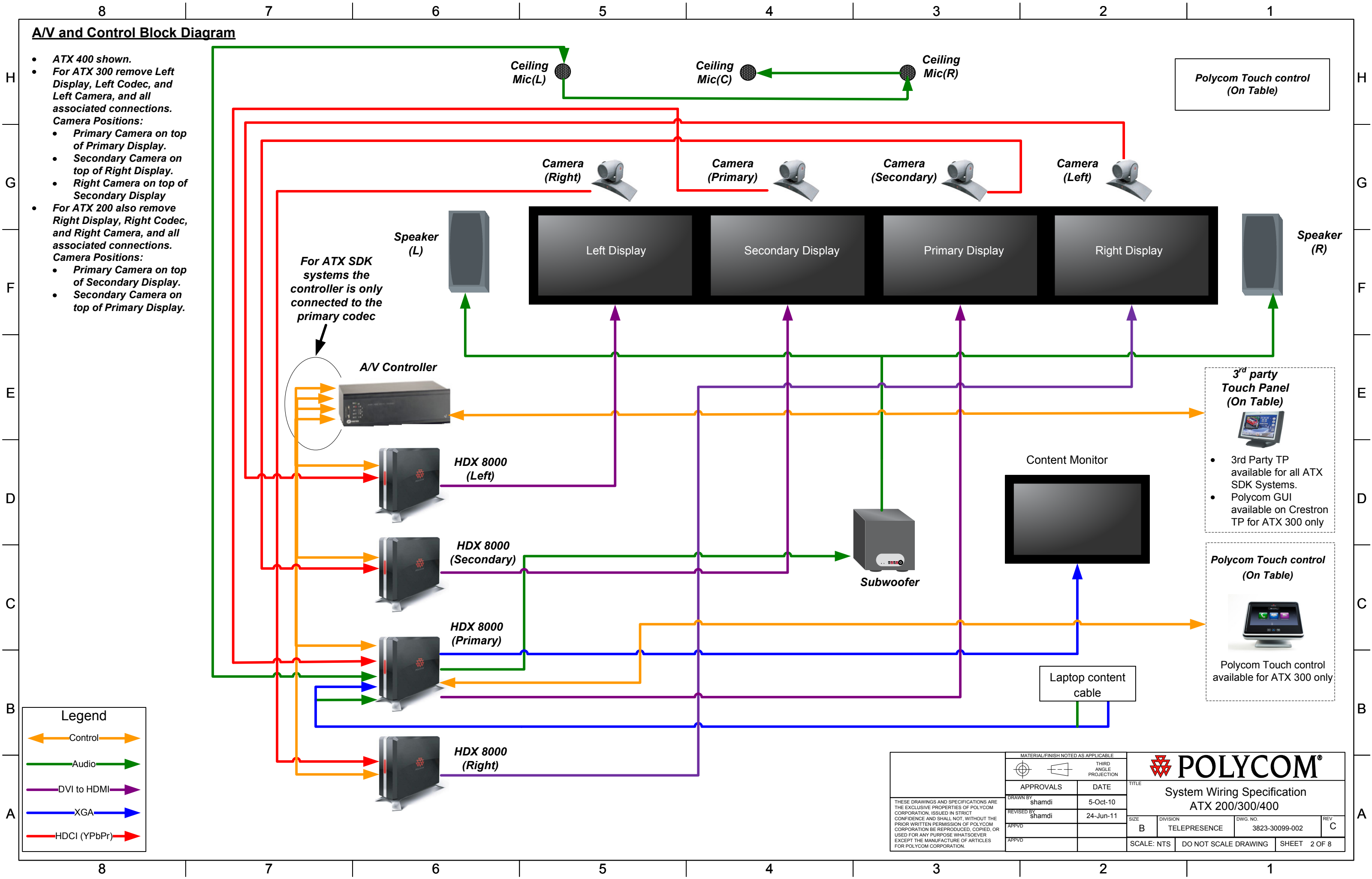
Document Number: 3823-30099-002

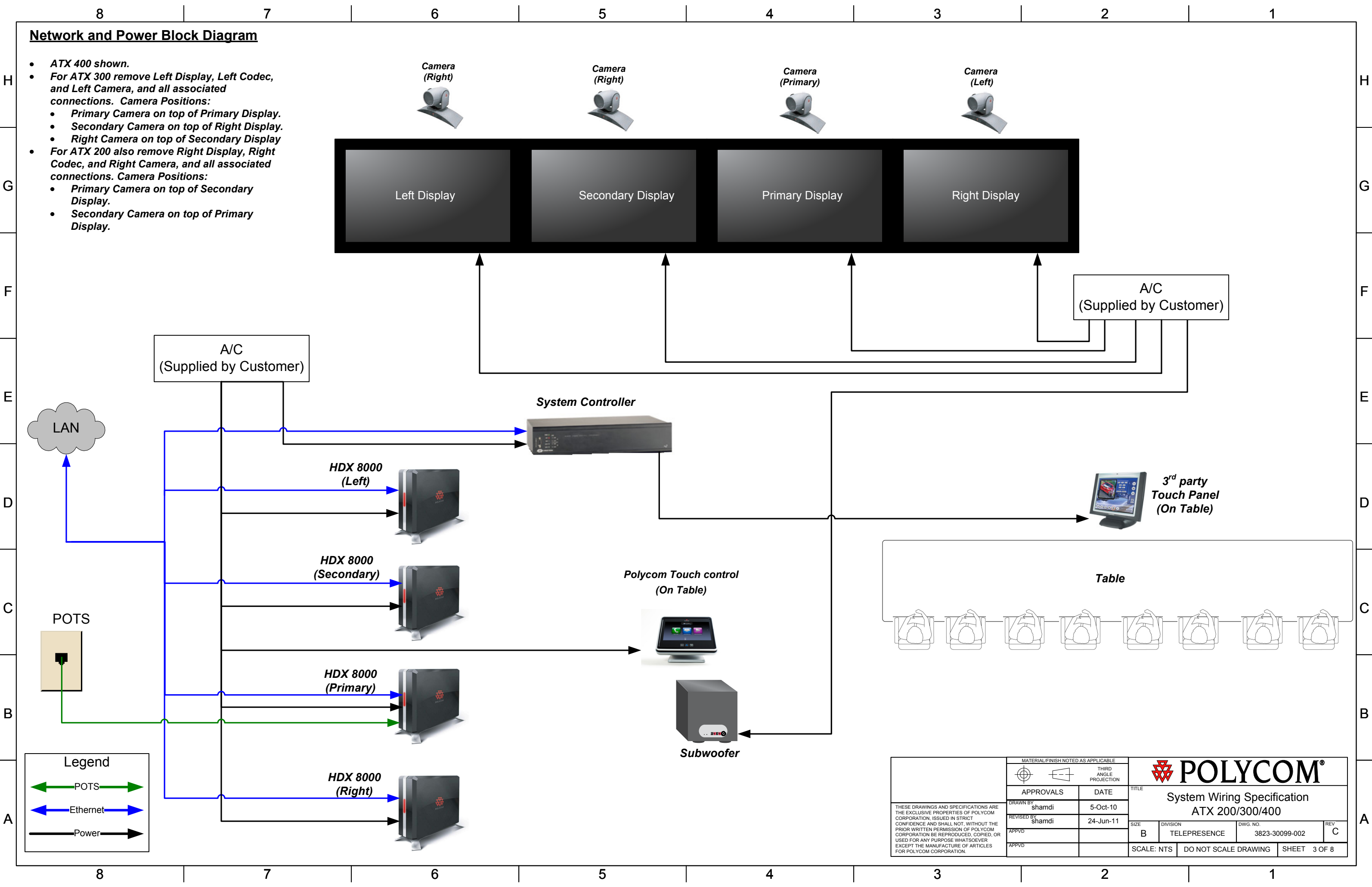
Revision: C

TOC:

- 1. Cover Page
- 2. A/V and Control Block Diagram
- 3. Network and Power Block Diagram
- 4. A/V and Control Wiring Detail
- 5. Network and Power Wiring Detail
- 6. Table Wiring Detail
- 7. Component/Cable Reference
- 8. Document Camera Kit Wire Diagram

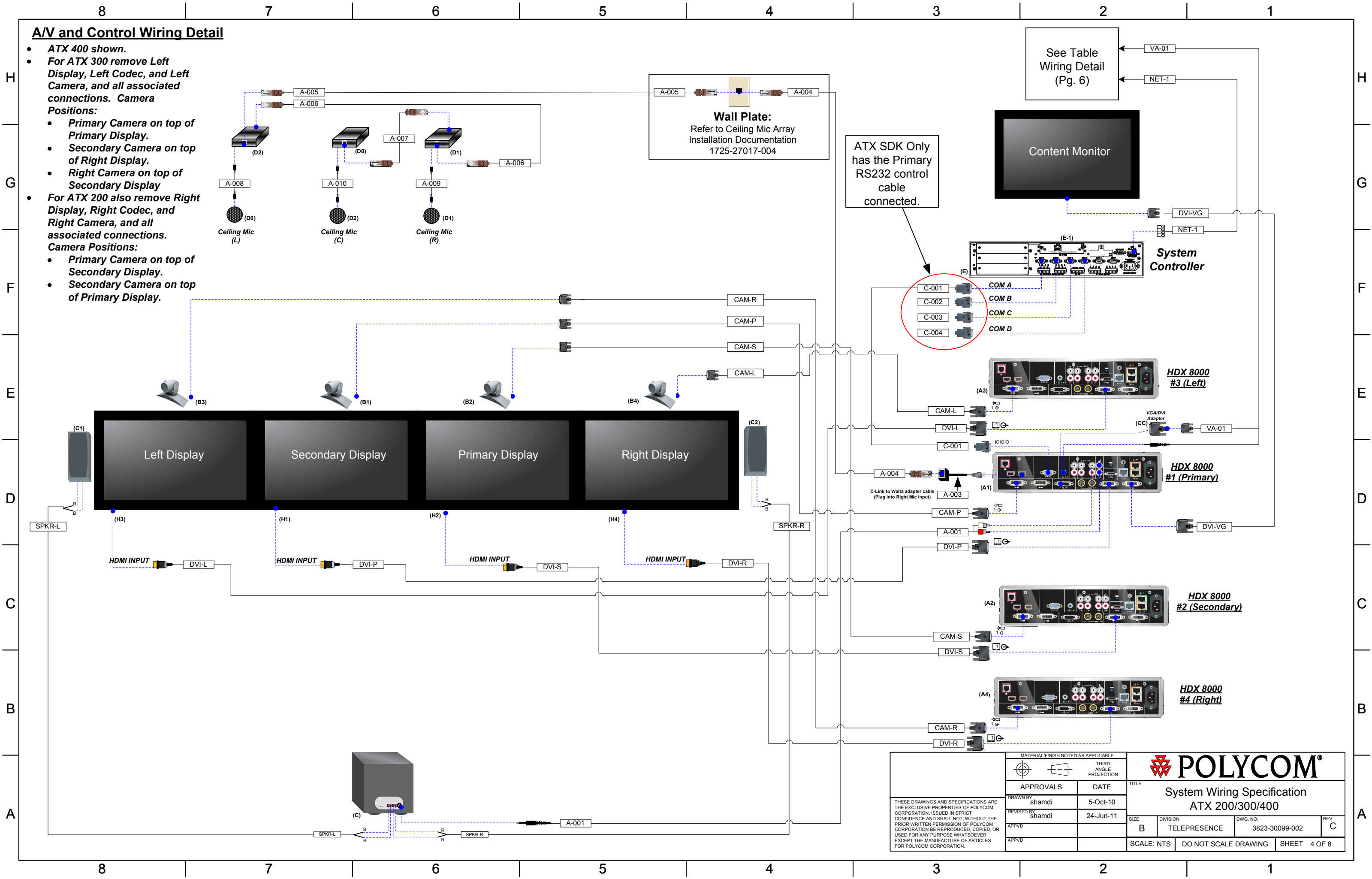
THESE DRAWINGS AND SPECIFICATIONS ARE THE EXCLUSIVE PROPERTIES OF POLYCOM CORPORATION. ISSUED IN STRICT CONFIDENCE AND SHALL NOT, WITHOUT THE PRIOR WRITTEN PERMISSION OF POLYCOM CORPORATION BE REPRODUCED, COPIED, OR USED FOR ANY PURPOSE WHATSOEVER EXCEPT THE MANUFACTURE OF ARTICLES FOR POLYCOM CORPORATION.	MATERIAL/FINISH NOTED AS APPLICABLE		POLYCOM®		
		THIRD ANGLE PROJECTION			
	APPROVALS		TITLE		
	DRAWN BY	DATE	System Wiring Specification ATX 200/300/400		
	shamdi	5-Oct-10			
	REVISED BY	DATE	SIZE	DIVISION	DWG. NO.
	shamdi	24-Jun-11	B	TELEPRESENCE	3823-30099-002
	APPVD				REV C
			SCALE: NTS DO NOT SCALE DRAWING SHEET 1 OF 8		





AV and Control Wiring Detail

- ATX 400 shown.
- For ATX 300 remove Left Display, Left Codec, and Left Camera, and all associated connections. Camera Positions:
 - Primary Camera on top of Primary Display.
 - Secondary Camera on top of Right Display.
 - Right Camera on top of Secondary Display
- For ATX 200 also remove Right Display, Right Codec, and Right Camera, and all associated connections. Camera Positions:
 - Primary Camera on top of Secondary Display.
 - Secondary Camera on top of Primary Display.



MATERIAL/FINISH NOTED AS APPLICABLE		THIRD ANGLE PROJECTION		POLYCOM®	
APPROVALS		DATE		TITLE	
DRAWN BY shamdi		5-Oct-10		System Wiring Specification	
REVISED BY shamdi		24-Jun-11		ATX 200/300/400	
APPVD				SIZE B	DIVISION TELEPRESENCE
APPVD				DWG. NO. 3823-30099-002	REV C
				SCALE: NTS	DO NOT SCALE DRAWING
				SHEET 4 OF 8	

THESE DRAWINGS AND SPECIFICATIONS ARE THE EXCLUSIVE PROPERTIES OF POLYCOM CORPORATION. ISSUED IN STRICT CONFIDENCE AND SHALL NOT, WITHOUT THE PRIOR WRITTEN PERMISSION OF POLYCOM CORPORATION BE REPRODUCED, COPIED, OR USED FOR ANY PURPOSE WHATSOEVER EXCEPT THE MANUFACTURE OF ARTICLES FOR POLYCOM CORPORATION.

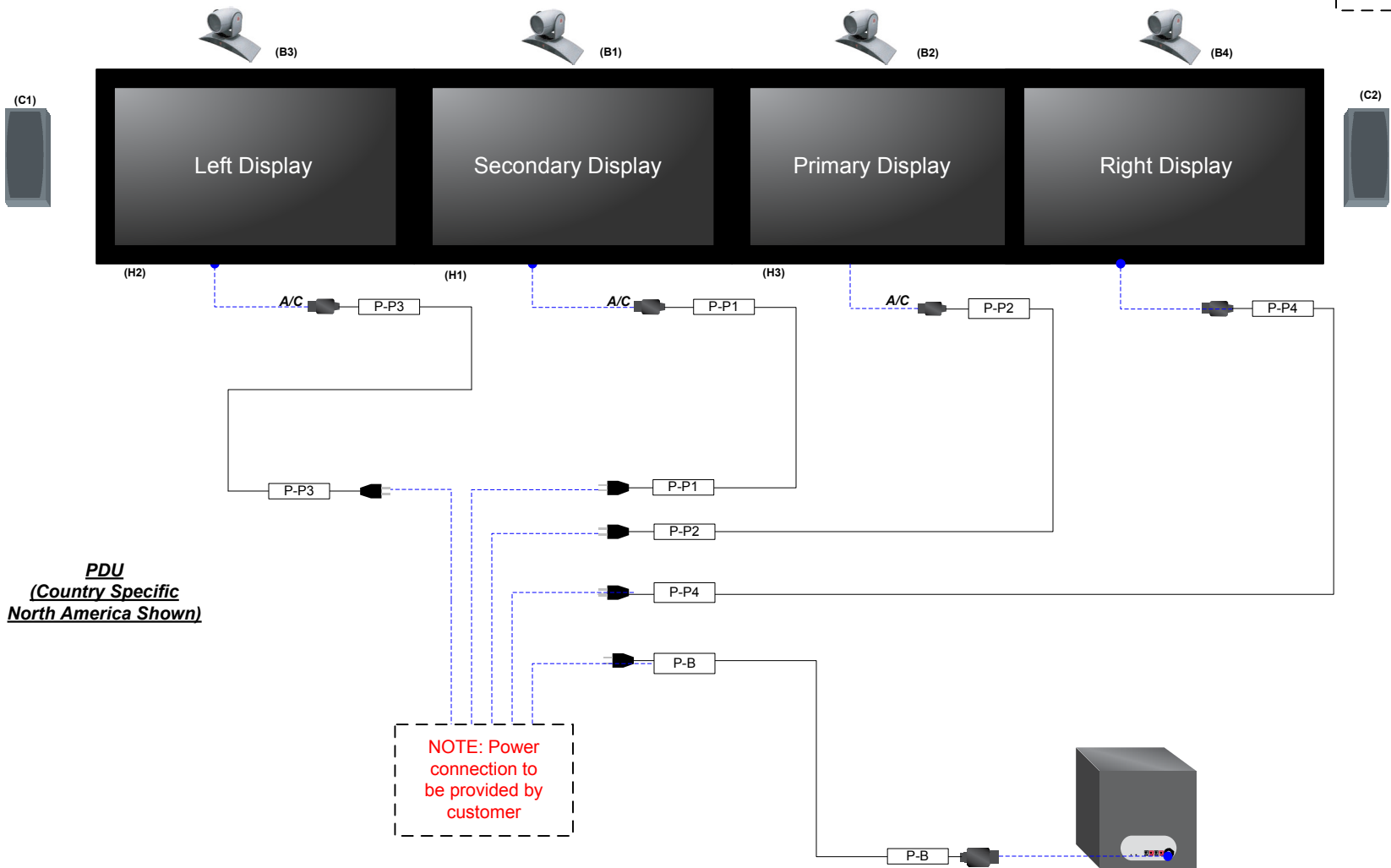
Network and Power Wiring Detail

- ATX 400 shown.
- For ATX 300 remove Left Display, Left Codec, and Left Camera, and all associated connections.
- Camera Positions:
 - Primary Camera on top of Primary Display.
 - Secondary Camera on top of Right Display.
 - Right Camera on top of Secondary Display
- For ATX 200 also remove Right Display, Right Codec, and Right Camera, and all associated connections. Camera Positions:
 - Primary Camera on top of Secondary Display.
 - Secondary Camera on top of Primary Display.

NOTE: Network and telephone connection to be provided by customer

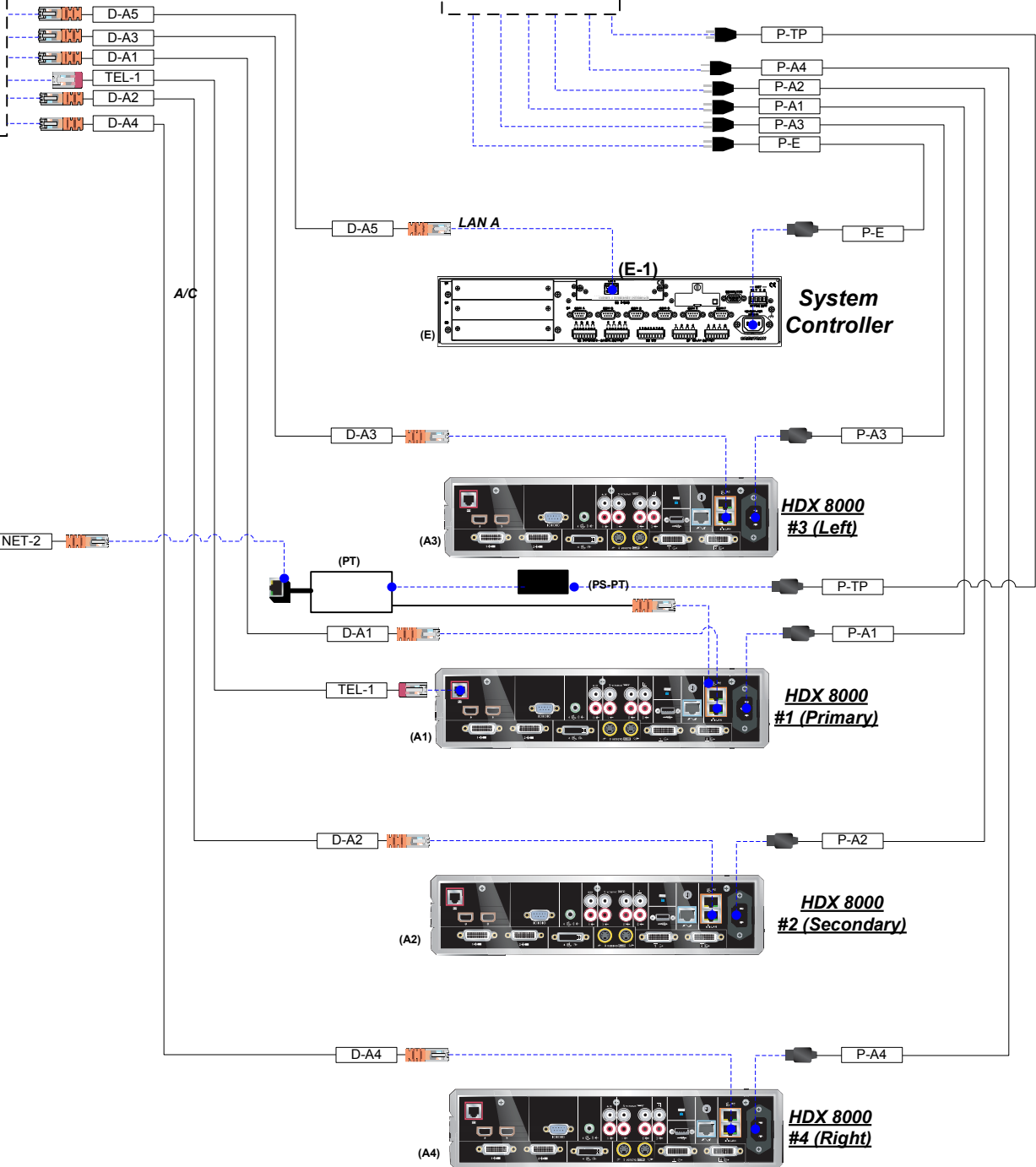
NOTE: Power connection to be provided by customer

To touch panel see page 6



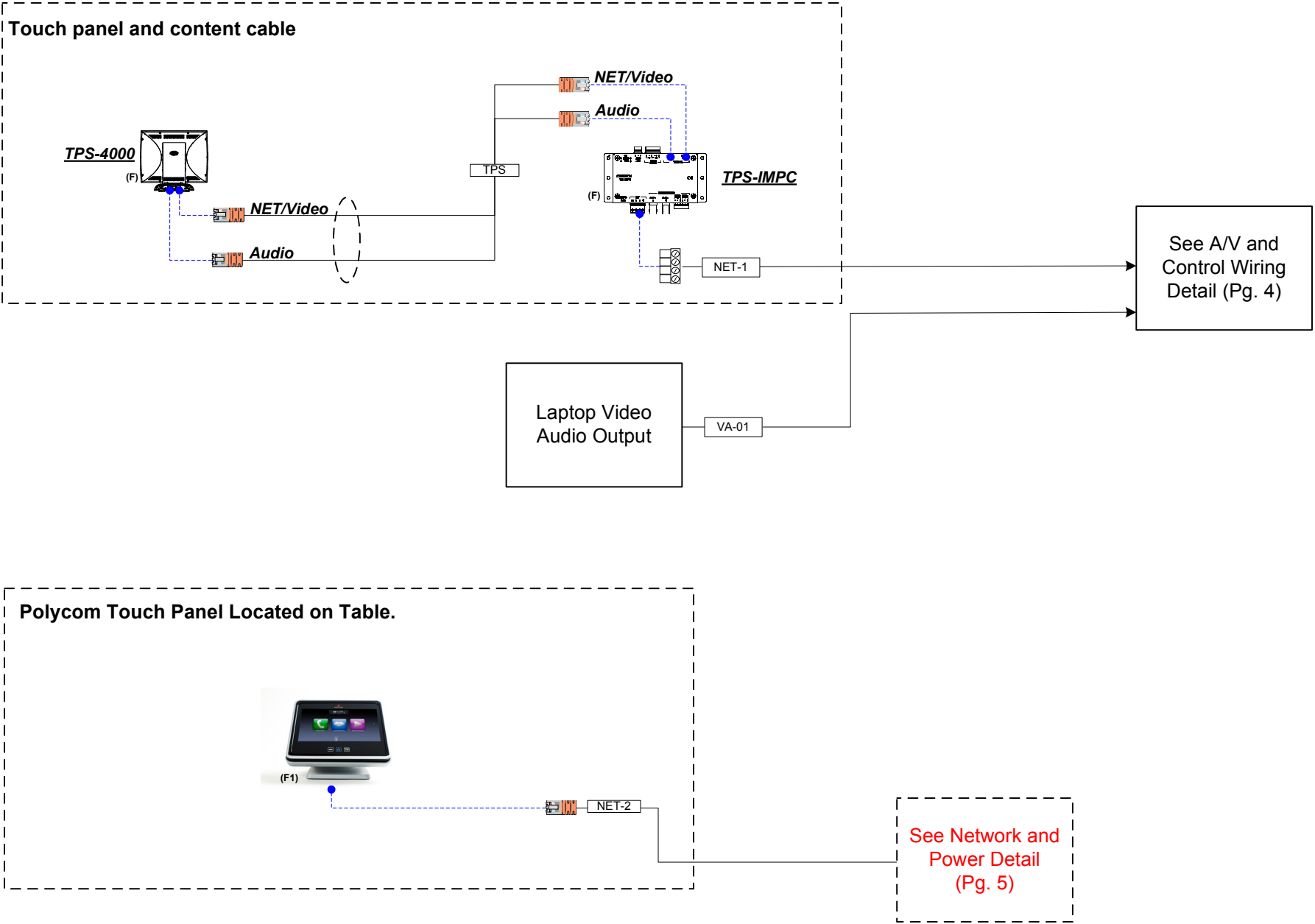
PDU
(Country Specific
North America Shown)



NOTE: Power connection to be provided by customer



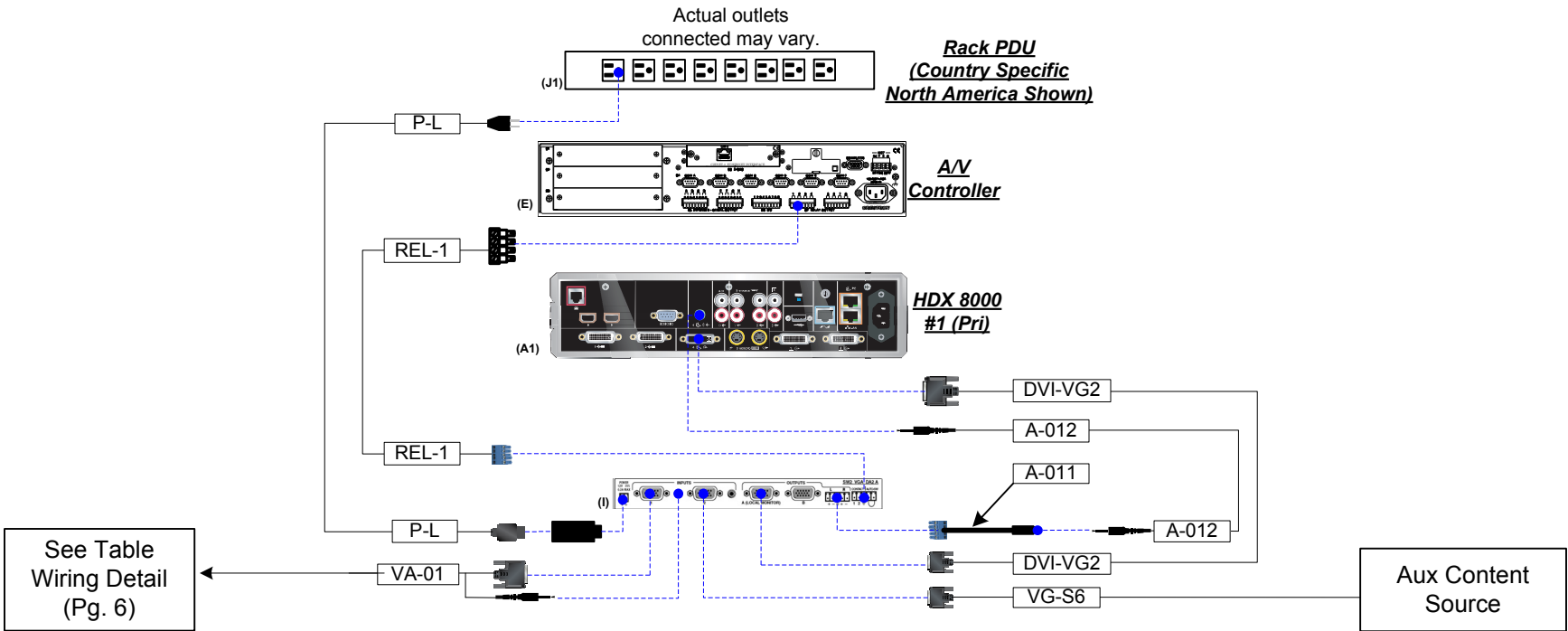
MATERIAL/FINISH NOTED AS APPLICABLE		THIRD ANGLE PROJECTION		POLYCOM®	
APPROVALS		DATE		TITLE	
DRAWN BY shamdi		5-Oct-10		System Wiring Specification	
REVISED BY shamdi		24-Jun-11		ATX 200/300/400	
APPVD				SIZE B	DIVISION TELEPRESENCE
APPVD				DWG. NO. 3823-30099-002	REV C
THESE DRAWINGS AND SPECIFICATIONS ARE THE EXCLUSIVE PROPERTIES OF POLYCOM CORPORATION. ISSUED IN STRICT CONFIDENCE AND SHALL NOT, WITHOUT THE PRIOR WRITTEN PERMISSION OF POLYCOM CORPORATION BE REPRODUCED, COPIED, OR USED FOR ANY PURPOSE WHATSOEVER EXCEPT THE MANUFACTURE OF ARTICLES FOR POLYCOM CORPORATION.		SCALE: NTS		DO NOT SCALE DRAWING	
				SHEET 5 OF 8	

Table Wiring Detail

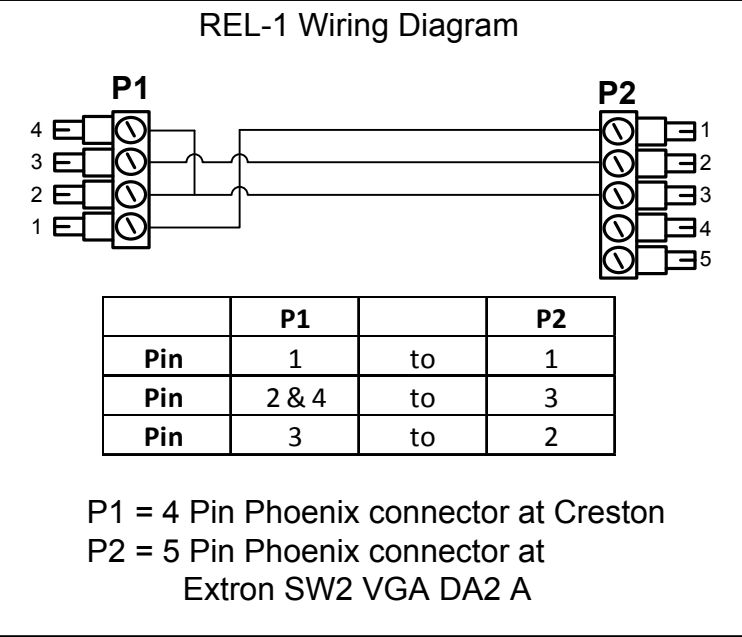


<p>THESE DRAWINGS AND SPECIFICATIONS ARE THE EXCLUSIVE PROPERTIES OF POLYCOM CORPORATION. ISSUED IN STRICT CONFIDENCE AND SHALL NOT, WITHOUT THE PRIOR WRITTEN PERMISSION OF POLYCOM CORPORATION BE REPRODUCED, COPIED, OR USED FOR ANY PURPOSE WHATSOEVER EXCEPT THE MANUFACTURE OF ARTICLES FOR POLYCOM CORPORATION.</p>	MATERIAL/FINISH NOTED AS APPLICABLE		 POLYCOM®					
							THIRD ANGLE PROJECTION	
	APPROVALS		DATE		TITLE System Wiring Specification ATX 200/300/400			
	DRAWN BY shamdi		5-Oct-10					
	REVISED BY shamdi		24-Jun-11		SIZE B			
	APPVD							
	APPVD				DWG. NO. 3823-30099-002			
				SCALE: NTS				
								DO NOT SCALE DRAWING
				SHEET 6 OF 8				

Document Camera Kit Wire Diagram



Note 1:



Label	Quantity	MFG Name	Model Name	Description
I	1	Extron	SW2 VGA DA2 A	2-port VGA switch/DA
REL-1	1	N/A	N/A	AV2 relay output 1 and 2 (See Note:1)
A-011	1	Extron	26-620-01	Phoenix to 3.5mm from VGA switch to Pri codec
A-012	1	N/A	N/A	1.5 M audio from VGA switch to Pri codec
DVI-VG2	1	N/A	N/A	5 Foot DVI-VGA from VGA switch to Pri codec
VG-S6	1	N/A	N/A	VGA cable
P-L	1	N/A	N/A	Extron SW2 Power Cord

APPROVALS

DRAWN BY

shamdi

REVISED BY

shamdi

APPVD

APPVD

DATE

5-Oct-10

DATE

24-Jun-11

MATERIAL/FINISH NOTED AS APPLICABLE

THIRD ANGLE PROJECTION

TITLE

System Wiring Specification
ATX 200/300/400

SIZE

B

DIVISION

TELEPRESENCE

DWG. NO.

3823-30099-002

REV

C

SCALE: NTS

DO NOT SCALE DRAWING

SHEET 8 OF 8