

Cover Page

History:

- 1. Rev A – Initial release.
- 2. Rev B – Fixed Camera/Display, naming and position.
- 3. Rev C – Added Polycom Touch Control and Eagle Eye III



ATX 200/300/400

System Wiring Specification

Polycom Telepresence Engineering

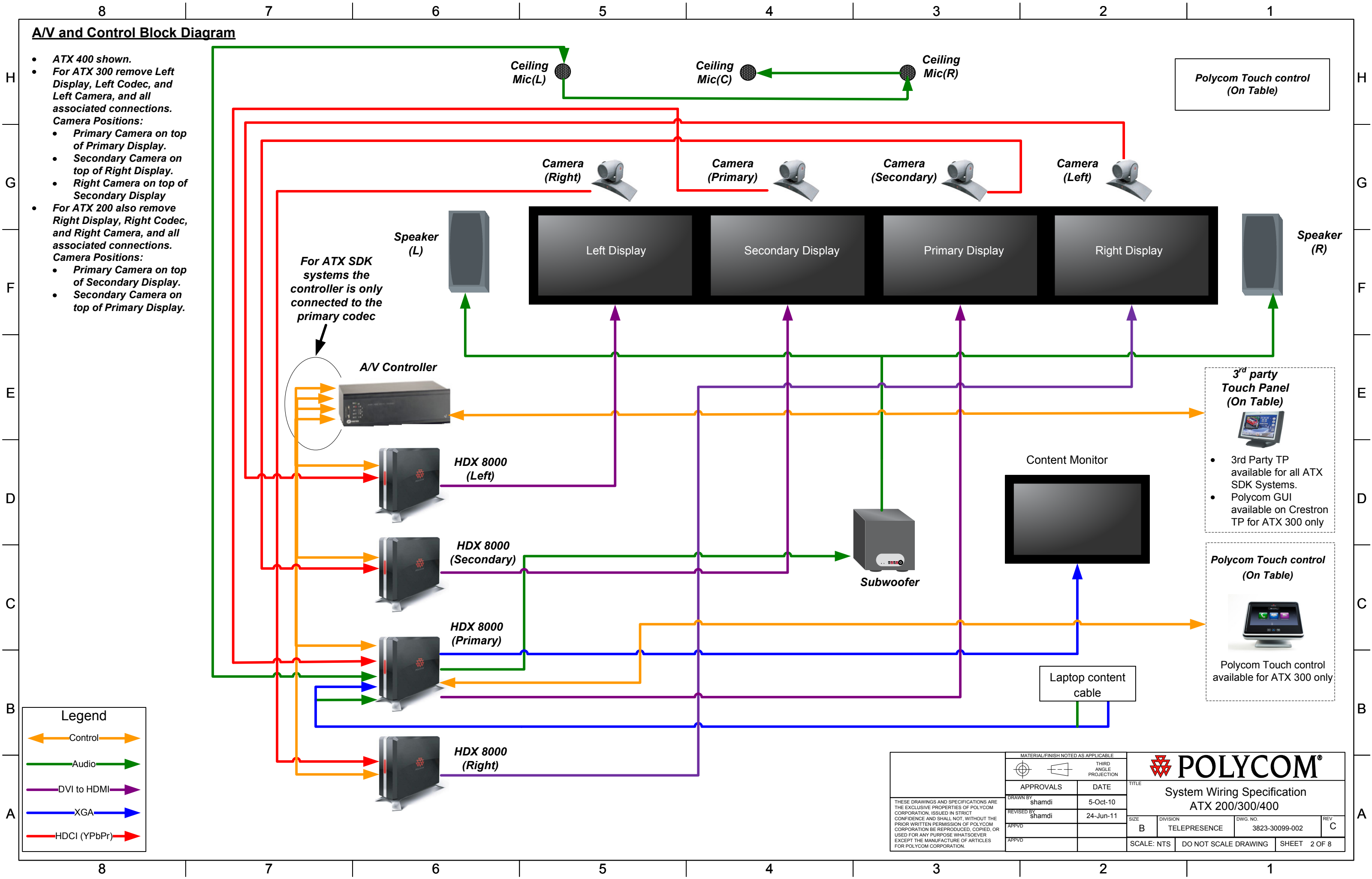
Document Number: 3823-30099-002

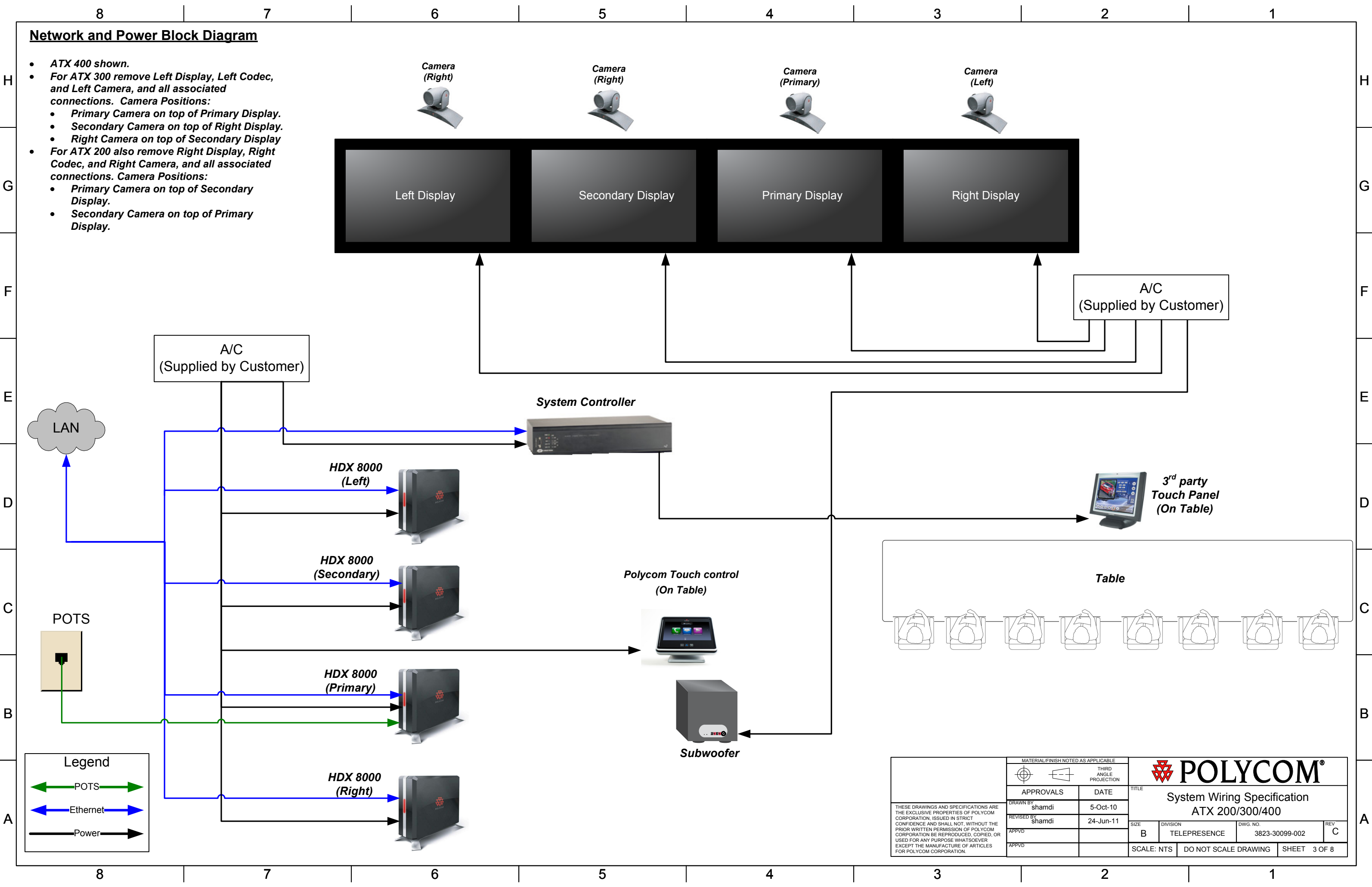
Revision: C

TOC:

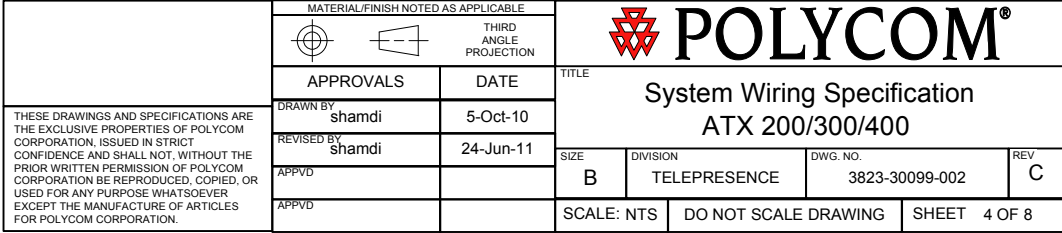
- 1. Cover Page
- 2. A/V and Control Block Diagram
- 3. Network and Power Block Diagram
- 4. A/V and Control Wiring Detail
- 5. Network and Power Wiring Detail
- 6. Table Wiring Detail
- 7. Component/Cable Reference
- 8. Document Camera Kit Wire Diagram

THESE DRAWINGS AND SPECIFICATIONS ARE THE EXCLUSIVE PROPERTIES OF POLYCOM CORPORATION. ISSUED IN STRICT CONFIDENCE AND SHALL NOT, WITHOUT THE PRIOR WRITTEN PERMISSION OF POLYCOM CORPORATION BE REPRODUCED, COPIED, OR USED FOR ANY PURPOSE WHATSOEVER EXCEPT THE MANUFACTURE OF ARTICLES FOR POLYCOM CORPORATION.	MATERIAL/FINISH NOTED AS APPLICABLE		POLYCOM®		
		THIRD ANGLE PROJECTION			
	APPROVALS		TITLE		
	DRAWN BY	DATE	System Wiring Specification ATX 200/300/400		
	shamdi	5-Oct-10			
	REVISED BY	DATE	SIZE	DIVISION	DWG. NO.
	shamdi	24-Jun-11	B	TELEPRESENCE	3823-30099-002
	APPVD				REV C
			SCALE: NTS DO NOT SCALE DRAWING SHEET 1 OF 8		





- **ATX 400 shown.**
- **For ATX 300 remove Left Display, Left Codec, and Left Camera, and all associated connections. Camera Positions:**
 - **Primary Camera on top of Primary Display.**
 - **Secondary Camera on top of Right Display.**
 - **Right Camera on top of Secondary Display**
- **For ATX 200 also remove Right Display, Right Codec, and Right Camera, and all associated connections. Camera Positions:**
 - **Primary Camera on top of Secondary Display.**
 - **Secondary Camera on top of Primary Display.**



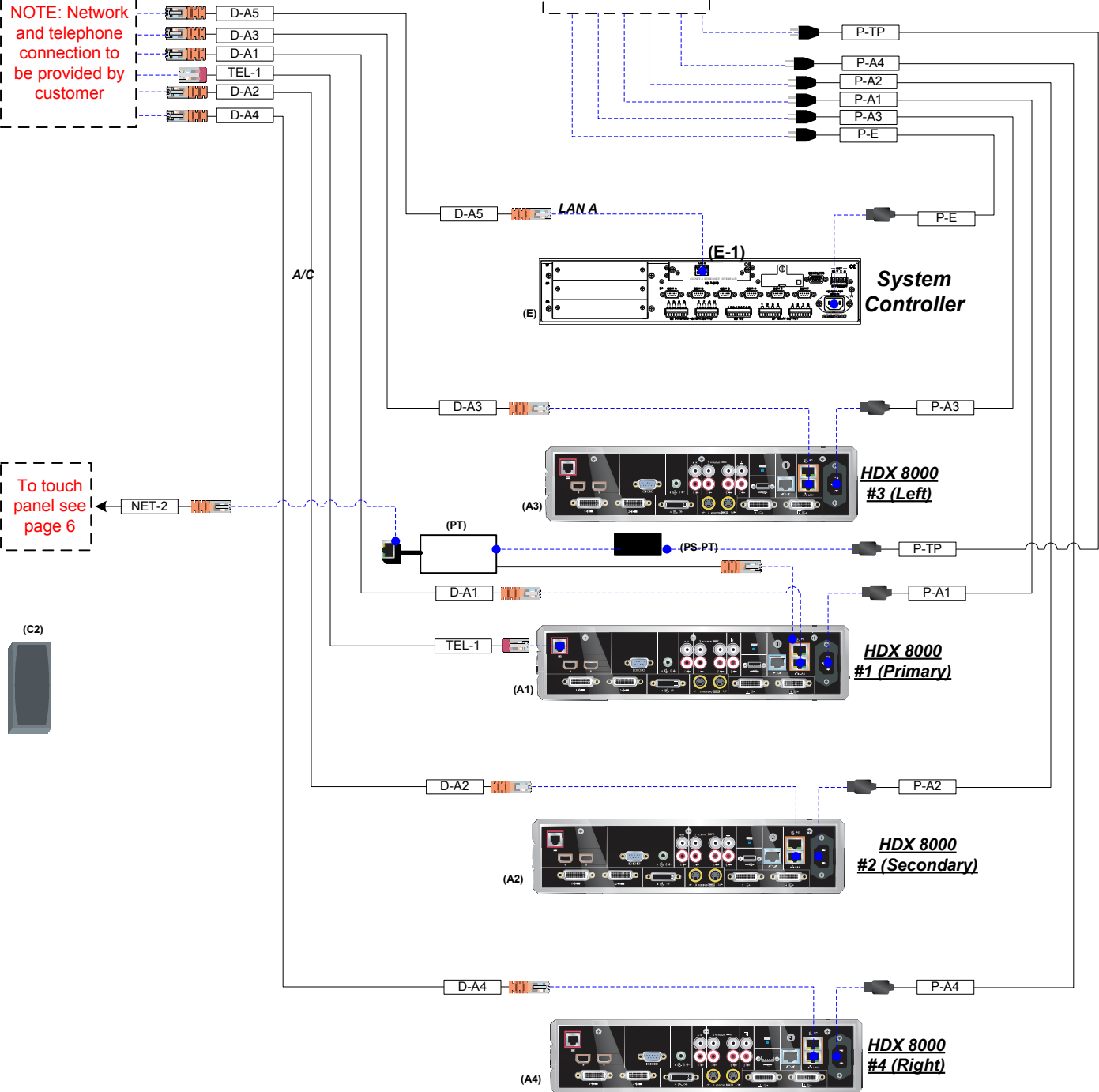
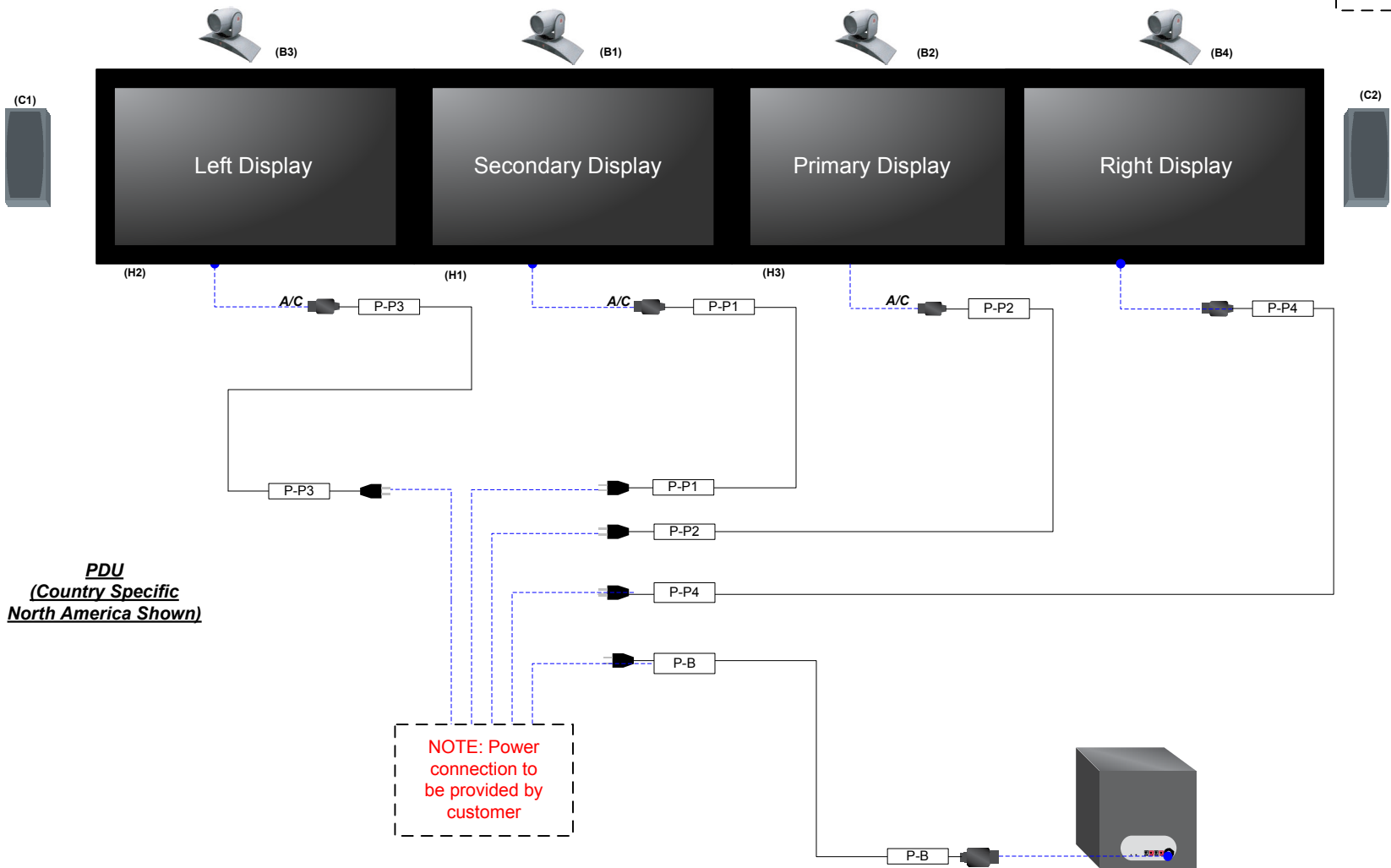
Network and Power Wiring Detail

- ATX 400 shown.
- For ATX 300 remove Left Display, Left Codec, and Left Camera, and all associated connections.
- Camera Positions:
 - Primary Camera on top of Primary Display.
 - Secondary Camera on top of Right Display.
 - Right Camera on top of Secondary Display
- For ATX 200 also remove Right Display, Right Codec, and Right Camera, and all associated connections. Camera Positions:
 - Primary Camera on top of Secondary Display.
 - Secondary Camera on top of Primary Display.

NOTE: Network and telephone connection to be provided by customer

NOTE: Power connection to be provided by customer

To touch panel see page 6



PDU
(Country Specific
North America Shown)

NOTE: Power connection to be provided by customer



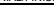
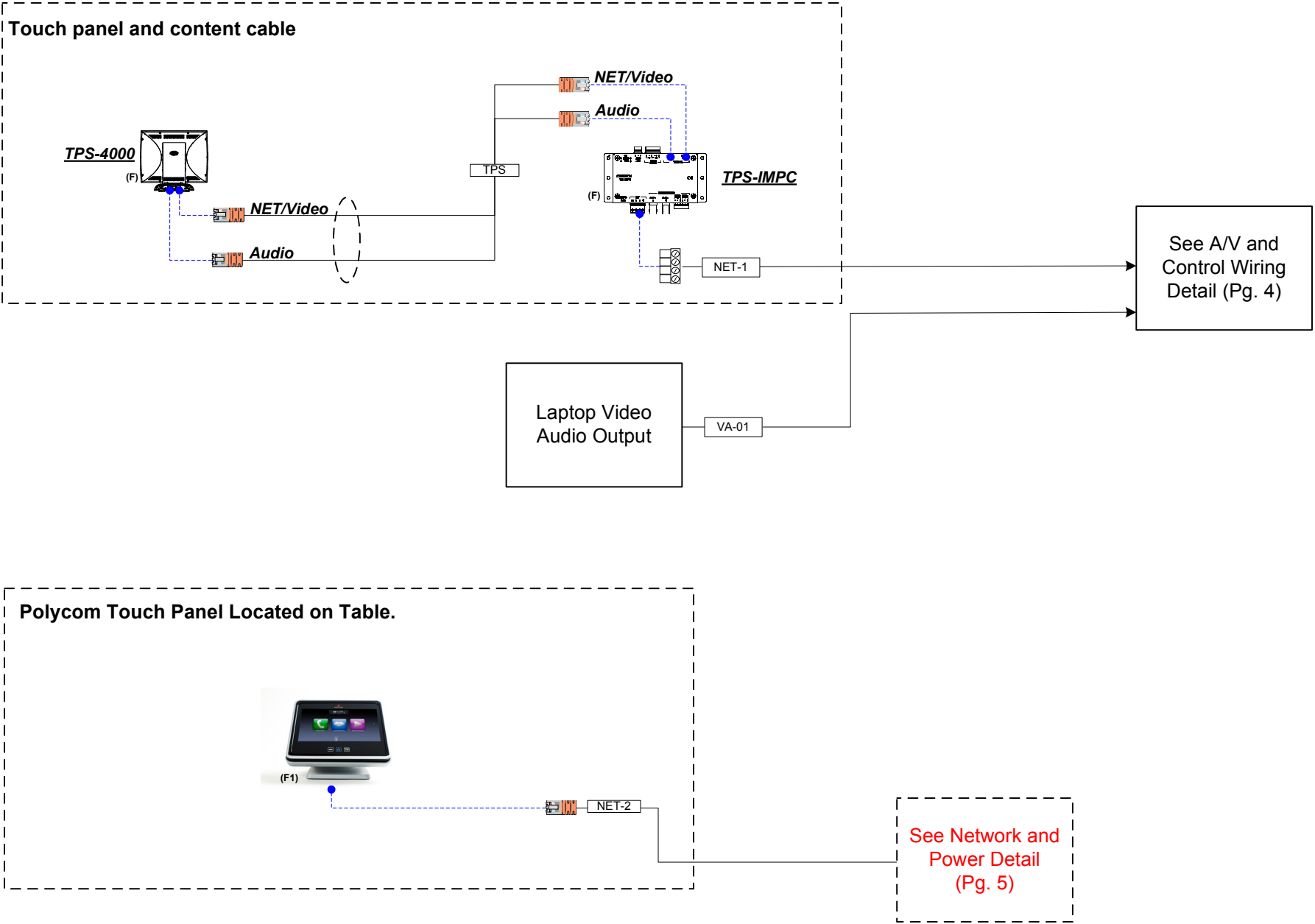



THESE DRAWINGS AND SPECIFICATIONS ARE THE EXCLUSIVE PROPERTIES OF POLYCOM CORPORATION. ISSUED IN STRICT CONFIDENCE AND SHALL NOT, WITHOUT THE PRIOR WRITTEN PERMISSION OF POLYCOM CORPORATION BE REPRODUCED, COPIED, OR USED FOR ANY PURPOSE WHATSOEVER EXCEPT THE MANUFACTURE OF ARTICLES FOR POLYCOM CORPORATION.	MATERIAL/FINISH NOTED AS APPLICABLE		 POLYCOM[®]										
							THIRD ANGLE PROJECTION						
	APPROVALS		DATE		TITLE System Wiring Specification ATX 200/300/400								
	DRAWN BY shamdi		5-Oct-10										
	REVISED BY shamdi		24-Jun-11		SIZE B								
APPVD				DIVISION TELEPRESENCE					DWG. NO. 3823-30099-002		REV C		
APPVD				SCALE: NTS					DO NOT SCALE DRAWING		SHEET 5 OF 8		

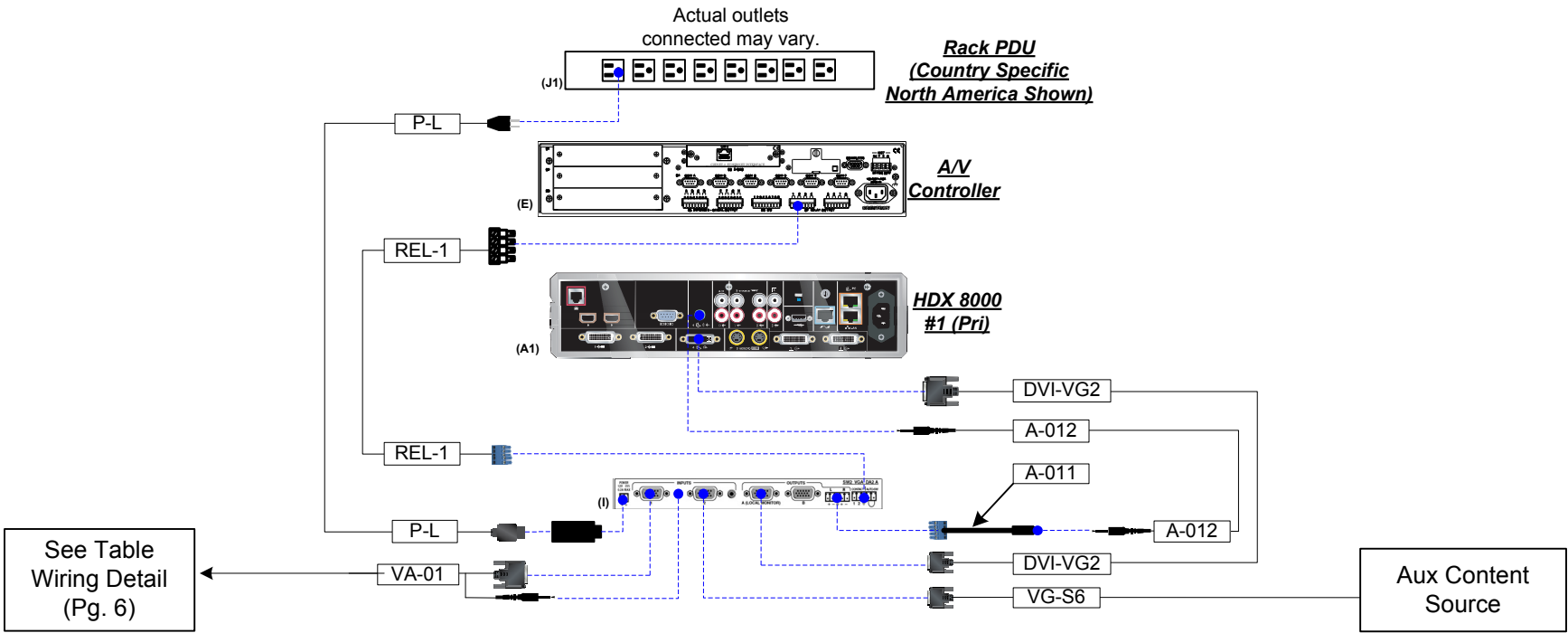
Table Wiring Detail



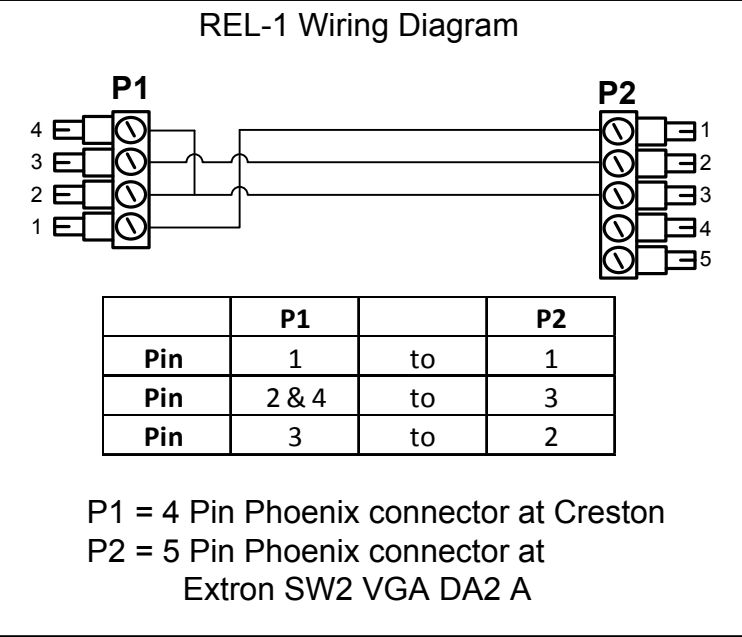
THESE DRAWINGS AND SPECIFICATIONS ARE THE EXCLUSIVE PROPERTIES OF POLYCOM CORPORATION. ISSUED IN STRICT CONFIDENCE AND SHALL NOT, WITHOUT THE PRIOR WRITTEN PERMISSION OF POLYCOM CORPORATION BE REPRODUCED, COPIED, OR USED FOR ANY PURPOSE WHATSOEVER EXCEPT THE MANUFACTURE OF ARTICLES FOR POLYCOM CORPORATION.	MATERIAL/FINISH NOTED AS APPLICABLE		 POLYCOM®						
						THIRD ANGLE PROJECTION			
	APPROVALS		DATE		TITLE System Wiring Specification ATX 200/300/400				
	DRAWN BY	shamdi	5-Oct-10						
	REVISED BY	shamdi	24-Jun-11						
	APPVD								
	APPVD				SIZE B	DIVISION TELEPRESENCE	DWG. NO. 3823-30099-002	REV C	
				SCALE: NTS		DO NOT SCALE DRAWING		SHEET 6 OF 8	

	8		7		6		5		4		3		2		1
Component/Cable Reference															
H	Ref			PLCM P/N	Part Desc	Qty			MFG Name	Model Name	MFG P/N	Description			
	SDK 200	ATX/SDK 300	SDK 400			SDK 200	ATX/SDK 300	SDK 400							
	Electronic Components														
	A1 - A2	A1 - A3	A1 - A4	2215-27952-001	ASSY,BASE BOX,HDX 8000,NT SC	2	3	4	Polycom	HDX 8000	2215-23358-001	HD Videoconferencing Engine			
	B1 - B2	B1 - B3	B1 - B4	1624-61803-001	CAM,MPT Z,EAGLEEYE III,BLK	2	3	4	Polycom	MPT Z-9	1624-61803-001	Eagle Eye III 1080 Camera Black			
	C			Supplied by Customer	SPKR,SUBWFR/AMP,270W,120V,w/FT	1			Supplied by Customer	Supplied by Customer	Supplied by Customer	Subwoofer			
	C1-C2			Supplied by Customer	SPKR,SATELLITE,150W,MC155,BLK	2			Supplied by Customer	Supplied by Customer	Supplied by Customer	Satellite Speakers			
	D0			2215-26927-001	ASSY,CEILING,MIC3,WHITE	1			Polycom	Celing Microphone	2215-26927-001	Ceiling mic kit (white)			
	D1, D2			2215-26928-001	ASSY,CEILING,MIC3,WHT ,EXT	2			Polycom	Celing Microphone	2215-26928-001	Ceiling mic extension kit (White)			
	H1 - H2	H1 - H3	H1 -H4	Supplied by Customer	Supplied by Customer	2	3	4	Supplied by Customer	Supplied by Customer	Supplied by Customer	1080p Display			
CC			Supplied by Customer	Supplied by Customer	1			Supplied by Customer	Supplied by Customer	Supplied by Customer	DVI to VGA Adapter				
G	Cables														
	A-001			Supplied by Customer	Supplied by Customer	1			Supplied by Customer	Supplied by Customer	Supplied by Customer	Dual RCA to mini stereo audio cable			
	A-003			2457-25646-001	ASSY,CBL,CLINK2,ADAPTER	1			Polycom	2457-25646-001	2457-25646-001	Clink to Walta adapter for ceiling mic			
	A-004			2457-24011-001	CBL,RJ45,10',CM2,MICA	1			Polycom	N/A	N/A	Ceiling mic cable (10')			
	A-005			2457-24008-001	CBL,RJ45,50',PLENUM,CM2,MICA	1			Polycom	N/A	N/A	Ceiling mic cable (50')			
	A-006, A-007			2457-24009-001	CBL,RJ45,25',PLENUM,CM2,MICA	2			Polycom	N/A	N/A	Ceiling mic cable (25')			
	A-008 - A-010			2457-23986-002	ASSY,CBL,CM2,609.6MM(24")	3			Polycom	N/A	N/A	Mini XLR mic cable			
	CAM-P,CAM-S	CAM-P,CAM-S,CAM-R	CAM-P,CAM-S,CAM-R,CAM-L	2457-23180-010	CBL,HDCI,ANALOG HI-RES 10 MTR	2	3	4	Polycom	2457-23180-010	2457-23180-010	Eagle Eye III camera cable (10m)			
	D-A1 - D-A3	D-A1 - D-A4	D-A1 - D-A5	Supplied by Customer	Supplied by Customer	4			Supplied by Customer	Supplied by Customer	Supplied by Customer	CAT . 6 snag less patch cable			
	P-A1 - P-A3	P-A1 - P-A4	P-A1 - P-A5	1457-24587-001	CBL,ASSY,PWR,6 FT	3	4	5	Markertek	POWER-6	POWER-6	6ft power cord			
P-B			Supplied by Customer	Supplied by Customer	1			Supplied by Customer	Supplied by Customer	Supplied by Customer	Use cord supplied with product				
P-P1 - P-P2	P-P1 - P-P3	P-P1 - P-P4	Supplied by Customer	Supplied by Customer	2	3	4	Supplied by Customer	Supplied by Customer	Supplied by Customer	Use cord supplied with product				
SPKR-L, SPKR-R			N/A	N/A	2			Polycom	N/A	N/A	Speaker wire (incl'd w/subwoofer kit)				
TEL-1			Supplied by Customer	Supplied by Customer	1			Supplied by Customer	Supplied by Customer	Supplied by Customer	Phone cord				
VA-01			1457-27132-001	CBL,VGA MM,MICRO,AUDIO,25 FT	1			Extron	MVGA-AM-M/25	26-566-04	25' VGA cord w/audio				
F	DVI-P, DVI-S	DVI-P, DVI-S, DVI-R	DVI-P, DVI-S,DVI-L, DVI-R	Supplied by Customer	Supplied by Customer	2	3	4	Supplied by Customer	Supplied by Customer	Supplied by Customer	DVI to HDMI cable			
	DVI-VG			Supplied by Customer	Supplied by Customer	1			Supplied by Customer	Supplied by Customer	Supplied by Customer	DVI-A(M) to HD15(M) Cable			
	3rd Party Control System (ATX 300, SDK 200/300/400) Supplied by Customer														
	E			Supplied by Customer	Supplied by Customer	1			Crestron	AV2	AV2	Control System Master			
	E-1			Supplied by Customer	Supplied by Customer	1			Crestron	C2ENET -1	C2ENET -1	Ethernet card for master controller			
	F			Supplied by Customer	Supplied by Customer	1			Crestron	TPS-4000	TPS-4000	10" touch panel with TPS-IMPC interface and cable			
	C-001	C-001 - C-003/C-001	C-001	1457-24591-001	CBL,ASSY,RPX,NULL,5FT	1	3 / 1	1	L-Com	CSNULL9FF-5A	CSNULL9FF-5A	5ft null modem (F-F)			
	NET-1			2457-24713-001	CBL,ASSY,RPX,200,CRESTNET	1			Polycom	2457-24713-001	2457-24713-001	Crestnet cable			
	P-E			Supplied by Customer	Supplied by Customer	1			Supplied by Customer	Supplied by Customer	Supplied by Customer	Crestron power supply cable			
	Polycom Control System (ATX 300 only) Supplied by Customer														
E			Supplied by Customer	Supplied by Customer	1			Crestron	AV2	AV2	Control System Master				
E-1			Supplied by Customer	Supplied by Customer	1			Crestron	C2ENET -1	C2ENET -1	Ethernet card for master controller				
F1			2200-30070-001	Polycom Touch Control	1			Polycom	Polycom Touch Control	Polycom Touch Control	7" Touch Control with Stand				
N/A	C-001 - C-003 / NA	N/A	1457-24591-001	CBL,ASSY,RPX,NULL,5FT	N/A	3 / N/A	N/A	L-Com	CSNULL9FF-5A	CSNULL9FF-5A	5ft null modem (F-F)				
NET-2			2457-26994-001	CBL,LAN,CAT5E,5M	1			Polycom	2457-26994-001	2457-26994-001	5M CAT 5E Cable				
P-E			Supplied by Customer	Supplied by Customer	1			Supplied by Customer	Supplied by Customer	Supplied by Customer	Crestron power supply				
PT			2457-40054-001	ASSY,CBL,PIC,SHLD,NOSHROUD,ONYX/RKPL	1			Polycom	2457-40054-001	2457-40054-001	PoE Power supply for Polycom Touch Control				
PS-PT			1465-42740-003	PSU,48V/0.4A,45 DEGREE PLUG	1			Polycom	1465-42740-003	1465-42740-003	Power supply for PoE (PT)				
E															
D															
C															
B															
A															

Document Camera Kit Wire Diagram



Note 1:



Label	Quantity	MFG Name	Model Name	Description
I	1	Extron	SW2 VGA DA2 A	2-port VGA switch/DA
REL-1	1	N/A	N/A	AV2 relay output 1 and 2 (See Note:1)
A-011	1	Extron	26-620-01	Phoenix to 3.5mm from VGA switch to Pri codec
A-012	1	N/A	N/A	1.5 M audio from VGA switch to Pri codec
DVI-VG2	1	N/A	N/A	5 Foot DVI-VGA from VGA switch to Pri codec
VG-S6	1	N/A	N/A	VGA cable
P-L	1	N/A	N/A	Extron SW2 Power Cord

THIRD ANGLE PROJECTION

APPROVALS

DATE

DRAWN BY
shamdi

5-Oct-10

REVISED BY
shamdi

24-Jun-11

APPVD

APPVD

THIRD ANGLE PROJECTION

DATE

5-Oct-10

24-Jun-11

THESE DRAWINGS AND SPECIFICATIONS ARE THE EXCLUSIVE PROPERTIES OF POLYCOM CORPORATION. ISSUED IN STRICT CONFIDENCE AND SHALL NOT, WITHOUT THE PRIOR WRITTEN PERMISSION OF POLYCOM CORPORATION BE REPRODUCED, COPIED, OR USED FOR ANY PURPOSE WHATSOEVER EXCEPT THE MANUFACTURE OF ARTICLES FOR POLYCOM CORPORATION.

POLYCOM®

TITLE

System Wiring Specification
ATX 200/300/400

SIZE
B

DIVISION
TELEPRESENCE

DWG. NO.
3823-30099-002

REV
C

SCALE: NTS

DO NOT SCALE DRAWING

SHEET 8 OF 8